



# HOOSIERS BY THE NUMBERS

Your premier source for labor market information for Indiana.



## LABOR MARKET REVIEW



## August 2019 Labor Market Review

Reported by: **Cassie Janes**

Regional Workforce Analyst  
[Email Cassie](#)  
cjanes@dwd.in.gov

Tel: 765-454-4760



## LABOR MARKET REVIEW

# Economic Growth Region 4

Statistical Data Report for August 2019, Released October 2019

## State Employment and Unemployment

Unemployment rates were lower in August in 5 states, higher in 3 states, and stable in 42 states and the District of Columbia, the U.S. Bureau of Labor Statistics reported. Five states had jobless rate decreases from a year earlier, 2 states had increases, and 43 states and the District had little or no change. The national unemployment rate, 3.7 percent, was unchanged over the month and little changed from August 2018.



## Economic Growth Region (EGR) 4

Benton, Carroll, Cass, Clinton, Fountain, Howard, Miami, Montgomery, Tippecanoe, Tipton, Warren and White Counties.

August 2019 Labor Force Estimates (not seasonally adjusted)						
Area	Labor Force	Employed	Unemployed	Aug-19	Jul-19	Aug-18
U.S.	164,019,000	157,816,000	6,203,000	3.8%	4.0%	3.9%
IN	3,398,091	3,288,977	109,114	3.2%	3.6%	3.6%
EGR 4	250,326	242,496	7,830	3.1%	3.4%	3.5%
Kokomo MSA	38,071	36,758	1,313	3.4%	3.8%	3.8%
Lafayette MSA	106,578	103,209	3,369	3.2%	3.4%	3.5%
Benton Co.	4,328	4,195	133	3.1%	3.6%	3.2%
Carroll Co.	9,711	9,422	289	3.0%	3.2%	3.4%
Cass Co.	17,871	17,313	558	3.1%	3.5%	3.7%
Clinton Co.	17,341	16,889	452	2.6%	2.8%	3.0%
Fountain Co.	8,038	7,771	267	3.3%	3.6%	3.7%
Howard Co.	38,071	36,758	1,313	3.4%	3.8%	3.8%
Miami Co.	15,994	15,431	563	3.5%	4.0%	3.9%
Montgomery Co.	18,868	18,276	592	3.1%	3.5%	3.3%
Tippecanoe Co.	92,539	89,592	2,947	3.2%	3.4%	3.5%
Tipton Co.	9,598	9,358	240	2.5%	2.8%	2.7%
Warren Co.	4,125	3,994	131	3.2%	3.2%	3.5%
White Co.	13,842	13,497	345	2.5%	2.7%	3.2%
Attica	1,490	1,442	48	3.2%	3.5%	4.4%
Crawfordsville	7,330	7,067	263	3.6%	4.1%	3.7%
Delphi	1,258	1,215	43	3.4%	4.3%	4.2%
Fowler	1,082	1,043	39	3.6%	4.6%	3.8%
Frankfort	8,163	7,954	209	2.6%	2.6%	2.8%
Kokomo	26,158	25,184	974	3.7%	4.1%	4.0%
Lafayette	36,772	35,759	1,013	2.8%	3.0%	3.2%
Logansport	7,898	7,633	265	3.4%	3.8%	3.9%
Monticello	2,749	2,678	71	2.6%	3.2%	3.5%
Peru	4,780	4,575	205	4.3%	5.2%	4.5%
Tipton	2,920	2,834	86	2.9%	3.1%	3.2%
West Lafayette	20,578	19,933	645	3.1%	3.3%	3.4%
Williamsport	831	806	25	3.0%	4.0%	3.2%

## Unemployment Rates by State (seasonally adjusted): August 2019

U.S. - 3.7%

Illinois - 4%

Indiana - 3.3%

Kentucky - 4.4%

Michigan - 4.2%

Ohio - 4.1%

Source: U.S. Department of Labor, Bureau of Labor Statistics

## Unemployment Rank by County (of 92 counties): August 2019

#21 - Miami (3.5%)

#25 - Howard (3.4%)

#29 - Fountain (3.3%)

#37 - Tippecanoe (3.2%)

#38 - Warren (3.2%)

#40 - Benton (3.1%)

#41 - Cass (3.1%)

#43 - Montgomery (3.1%)

#50 - Carroll (3%)

#80 - Clinton (2.6%)

#87 - Tipton (2.5%)

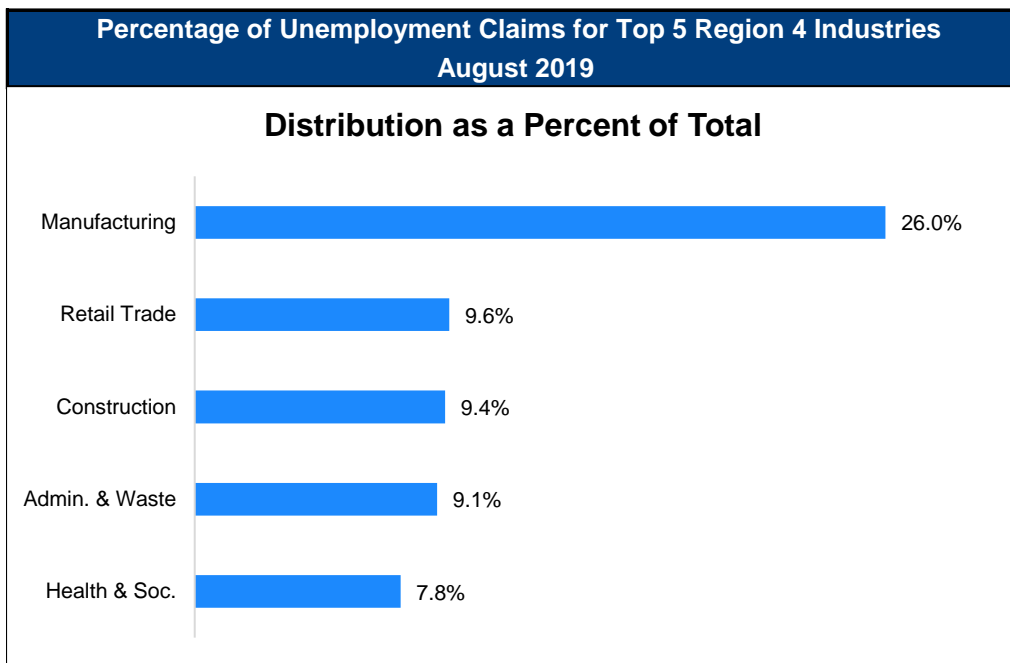
#89 - White (2.5%)

Source: Indiana Department of Workforce Development, Research and Development, Local Area Unemployment Statistics

Source: Indiana Department of Workforce Development, Research & Analysis, Local Area Unemployment Statistics | Unemployment Statistics Released:09/19 | Notes: The data displayed are presented as estimates only. The most recent month's data are always preliminary and are revised when the next month's data are released.

Consumer Price Index (CPI-U Change), Unadjusted Percent Change to August 2019 from				
CPI Item	Aug-18	Jul-19	Aug-18	Jul-19
	U.S. City		Midwest Region*	
<b>All Items</b>	<b>1.7%</b>	<b>0.0%</b>	<b>1.5%</b>	<b>0.0%</b>
Food & Beverages	1.7%	0.1%	1.7%	0.1%
Housing	2.8%	0.1%	2.5%	0.0%
Apparel	1.0%	1.2%	2.8%	2.2%
Transportation	-1.1%	-1.1%	-1.0%	-1.1%
Medical Care	3.5%	0.6%	3.2%	1.0%
Recreation	1.2%	0.3%	0.4%	0.0%
Education & Communication	0.6%	0.4%	-0.7%	0.3%
Other Goods & Services	2.3%	0.3%	2.3%	0.1%

\*Midwest region = Midwest Urban Average. Midwest Region includes Illinois, Indiana, Iowa, Kansas, Michigan, Minnesota, Missouri, Nebraska, North Dakota, Ohio, South Dakota and Wisconsin | Source: U.S. Bureau of Labor Statistics



Source: Indiana Department of Workforce Development, Research and Analysis

## WARN Notices

WARN Notices for Region 4 for August 2019				
Company	City	County	# of workers affected	Notice Date

**There are no WARN Notices for August 2019 for Region 4.**

Source: Indiana Department of Workforce Development, WARN Notices | For information on WARN Act requirements, you may go to the U.S. Department of Labor Employment Training Administration Fact Sheet:

<https://www.doleta.gov/programs/factsht/warn.htm>

## Unemployment Claims: August 2019

### Region 4

#### Initial Claims

08/03/19 - 57(D)

08/10/19 - 55(D)

08/17/19 - 83(D)

08/24/19 - 62(D)

08/31/19 - 76(D)

#### Continued Claims

08/03/19 - 648

08/10/19 - 627

08/17/19 - 639

08/24/19 - 631

08/31/19 - 639

#### Total Claims

08/03/19 - 705

08/10/19 - 682

08/17/19 - 722

08/24/19 - 693

08/31/19 - 715

### State of Indiana

#### Initial Claims

08/03/19 - 1,851

08/10/19 - 2,240

08/17/19 - 1,773

08/24/19 - 1,701

08/31/19 - 1718

#### Continued Claims

08/03/19 - 11,590

08/10/19 - 11,212

08/17/19 - 11,058

08/24/19 - 11,091

08/31/19 - 10,989

#### Total Claims

08/03/19 - 13,441

08/10/19 - 13,452

08/17/19 - 12,831

08/24/19 - 12,792

08/31/19 - 12,707

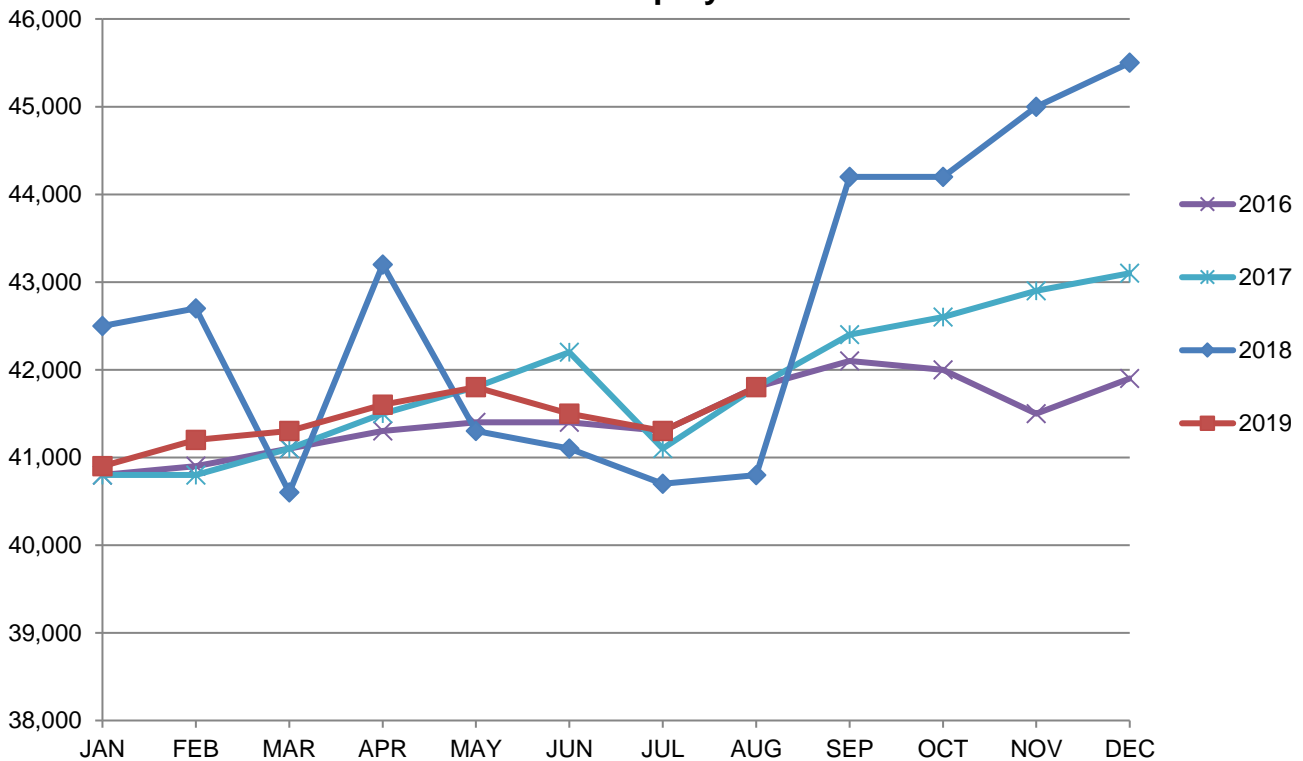
(D) indicates item is affected by non-disclosure issues relating to industry or ownership status |

Source: Indiana Department of Workforce Development, Research and Development

Kokomo MSA							
Wage and Salaried Employment	August 2019			# Change	% Change	# Change	% Change
Industry	Aug-19	Jul-19	Aug-18	Jul-19 to Aug-19	Aug-18 to Aug-19		
<b>Total Nonfarm</b>	<b>41,800</b>	<b>41,300</b>	<b>40,800</b>	<b>500</b>	<b>1.2%</b>	<b>1,000</b>	<b>2.5%</b>
<b>Total Private</b>	<b>37,100</b>	<b>37,200</b>	<b>36,000</b>	<b>-100</b>	<b>-0.3%</b>	<b>1,100</b>	<b>3.1%</b>
Goods Producing	13,500	13,500	12,900	0	0.0%	600	4.7%
Service-Providing	28,300	27,800	27,900	500	1.8%	400	1.4%
Private Service Providing	23,600	23,700	23,100	-100	-0.4%	500	2.2%
Mining, Logging and Construction	1,200	1,200	1,100	0	0.0%	100	9.1%
Manufacturing	12,300	12,300	11,800	0	0.0%	500	4.2%
Trade, Transportation, and Utilities	6,700	6,700	6,700	0	0.0%	0	0.0%
Wholesale Trade	1,000	1,000	1,000	0	0.0%	0	0.0%
Retail Trade	4,800	4,800	4,800	0	0.0%	0	0.0%
Transportation, Warehousing, and Utilities	900	900	900	0	0.0%	0	0.0%
Information	200	200	200	0	0.0%	0	0.0%
Financial Activities	1,200	1,200	1,200	0	0.0%	0	0.0%
Leisure and Hospitality	4,500	4,500	4,500	0	0.0%	0	0.0%
Other Services	1,900	1,900	1,900	0	0.0%	0	0.0%
<b>Government</b>	<b>4,700</b>	<b>4,100</b>	<b>4,800</b>	<b>600</b>	<b>14.6%</b>	<b>-100</b>	<b>-2.1%</b>
Local Government	3,300	2,900	3,500	400	13.8%	-200	-5.7%
Local Government Educational Services	1,900	1,500	2,100	400	26.7%	-200	-9.5%
Local Government excluding Educational Services	1,400	1,400	1,400	0	0.0%	0	0.0%

Source: Indiana Dept of Workforce Development, Research and Analysis, Current Employment Statistics

### Kokomo MSA Employment Trends

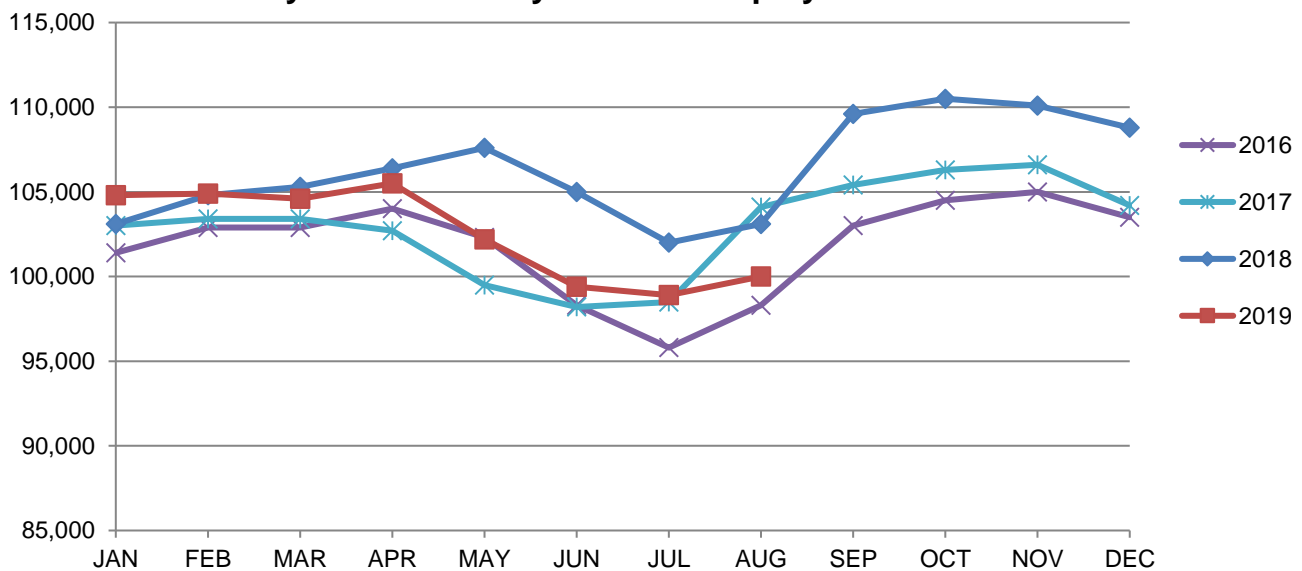


Source: Indiana Department of Workforce Development, Research & Analysis, Current Employment Statistics | Note: Historical data for the most recent 4 years (both seasonally adjusted and not seasonally adjusted) are revised near the beginning of each calendar year, prior to the release of January estimates for statewide data.

Lafayette-West Lafayette MSA							
Wage and Salaried Employment	August 2019			# Change	% Change	# Change	% Change
Industry	Aug-19	Jul-19	Aug-18	Jul-19 to Aug-19	Aug-18 to Aug-19		
<b>Total Nonfarm</b>	<b>100,000</b>	<b>98,900</b>	<b>103,100</b>	<b>1,100</b>	<b>1.1%</b>	<b>-3,100</b>	<b>-3.0%</b>
<b>Total Private</b>	<b>78,100</b>	<b>78,200</b>	<b>77,500</b>	<b>-100</b>	<b>-0.1%</b>	<b>600</b>	<b>0.8%</b>
Goods Producing	24,100	24,300	23,200	-200	-0.8%	900	3.9%
Service Providing	75,900	74,600	79,900	1,300	1.7%	-4,000	-5.0%
Private Service Providing	54,000	53,900	54,300	100	0.2%	-300	-0.6%
Mining, Logging and Construction	3,800	4,000	3,700	-200	-5.0%	100	2.7%
Manufacturing	20,300	20,300	19,500	0	0.0%	800	4.1%
Durable Goods	15,000	15,200	15,100	-200	-1.3%	-100	-0.7%
Trade, Transportation and Utilities	14,100	14,000	14,600	100	0.7%	-500	-3.4%
Wholesale Trade	2,600	2,600	2,500	0	0.0%	100	4.0%
Retail Trade	8,900	8,800	9,500	100	1.1%	-600	-6.3%
Transportation, Warehousing and Utilities	2,600	2,600	2,600	0	0.0%	0	0.0%
Information	700	700	700	0	0.0%	0	0.0%
Financial Activities	3,400	3,400	3,600	0	0.0%	-200	-5.6%
Professional and Business Services	7,700	7,400	8,000	300	4.1%	-300	-3.8%
Education and Health Services	13,000	13,000	12,600	0	0.0%	400	3.2%
Leisure and Hospitality	10,000	10,300	10,000	-300	-2.9%	0	0.0%
Accommodation and Food Services	9,100	9,100	9,200	0	0.0%	-100	-1.1%
Other Services	5,100	5,100	4,800	0	0.0%	300	6.3%
<b>Total Government</b>	<b>21,900</b>	<b>20,700</b>	<b>25,600</b>	<b>1,200</b>	<b>5.8%</b>	<b>-3,700</b>	<b>-14.5%</b>
Federal Government	500	500	500	0	0.0%	0	0.0%
State Government	14,400	14,700	18,100	-300	-2.0%	-3,700	-20.4%
Local Government	7,000	5,500	7,000	1,500	27.3%	0	0.0%
Local Government Educational Services	4,100	2,800	4,200	1,300	46.4%	-100	-2.4%

Source: Indiana Dept of Workforce Development, Research and Analysis, Current Employment Statistics

### Lafayette-West Lafayette MSA Employment Trends



Source: Indiana Department of Workforce Development, Research & Analysis, Current Employment Statistics | Note: Historical data for the most recent 4 years (both seasonally adjusted and not seasonally adjusted) are revised near the beginning of each calendar year, prior to the release of January estimates for statewide data.

<b>Frequently Listed Jobs</b>	
<b>Top 20 job listings by number of openings in Region 4 in the past month</b>	
<b>Rank</b>	<b>Occupations</b>
1	Production Workers, All Other
2	Quality Control Analysts
3	Registered Nurses
4	Dining Room and Cafeteria Attendants and Bartender Helpers
5	Laborers and Freight, Stock, and Material Movers, Hand
6	Licensed Practical and Licensed Vocational Nurses
7	Engine and Other Machine Assemblers
8	Engineers, All Other
9	Stock Clerks, Sales Floor
10	Nursing Assistants
11	Painters, Transportation Equipment
12	Janitors and Cleaners, Except Maids and Housekeeping Cleaners
13	Counter Attendants, Cafeteria, Food Concession, and Coffee Shop
14	Office Clerks, General
15	Executive Secretaries and Executive Administrative Assistants
16	Customer Service Representatives
17	Food Preparation Workers
18	Retail Salespersons
19	Tellers
20	Building Cleaning Workers, All Other

Source: Indiana Workforce Development, Indiana Career Connect

<b>Applicant Pool</b>	
<b>Top 20 occupations desired by applicants on their resumes in the past 12 months</b>	
<b>Occupations</b>	<b># of applicants</b>
Production Workers, All Other	939
Assemblers and Fabricators, All Other	705
Helpers--Production Workers	459
Laborers and Freight, Stock, and Material Movers, Hand	370
Cashiers	287
Customer Service Representatives	242
Team Assemblers	207
Office Clerks, General	189
Office and Administrative Support Workers, All Other	180
Managers, All Other	164
Extraction Workers, All Other	152
Retail Salespersons	150
Stock Clerks and Order Fillers	140
Nursing Assistants	128
Combined Food Preparation and Serving Workers, Including Fast Food	128
First-Line Supervisors of Production and Operating Workers	128
Industrial Truck and Tractor Operators	117
Janitors and Cleaners, Except Maids and Housekeeping Cleaners	115
Welders, Cutters, Solderers, and Brazers	113
Engineering Technicians, Except Drafters, All Other	111

Source: Indiana Workforce Development, Indiana Career Connect



# The role of the Occupational Employment Statistics Survey in shaping workforce data



Excerpted from Incontext, Indiana Business Research Center at Indiana University's Kelly School of Business

**Alexia Maggis**

Senior Labor Analyst, Research and Analysis division, Indiana Department of Workforce Development

Knowing which occupations are growing or declining, where jobs are being created, what skills are in demand, how much someone can expect to earn in a given occupation, and what educational attainment is needed to advance in a career field are all fundamental data points that (should) drive consumer decision making and career counseling, from K-16 through retirement. At the Indiana Department of Workforce Development (IDWD), this is exactly the perspective and labor market information we produce and use to structure effective education and training programs and share publicly through [IndianaCareerReady.com](http://IndianaCareerReady.com), so Hoosiers can live their best lives.

In providing these economic perspectives, having accurate and timely data is paramount to informing business decisions, career choices and training programs for employers, job seekers and other interest groups. Two notable sources of the data that IDWD collects and analyzes come directly from employers via Quarterly Census of Employment and Wages (QCEW) reports and Occupational Employment Statistics (OES) surveys. Nationally, state workforce agencies (e.g., IDWD) work cooperatively with the U.S. Bureau of Labor Statistics (BLS) to collect these data points, estimating employment and wages for over 800 occupations. Through the QCEW, employers report industry-level employment and wage data for each of their employees as is required for the administration of the Unemployment Insurance Program. The OES survey samples a portion of these same employers to dive deeper into their quarterly wage reports, gathering more occupational-specific information. All states, including the District of Columbia, Puerto Rico, Guam and the Virgin Islands, distribute the OES survey semi-annually to nonfarm establishments. To reduce respondent burden, establishments are only surveyed at most once every three years.

## What data are collected

The OES survey collects wage and employment estimates. Defining these two terms is critical for gathering accurate, relevant data.

Wages are defined by the BLS as any straight-time gross pay, including:

- **Base rates** – payment for work performed during a specified time
- **Commissions** – payment calculated as a percentage of sales
- **Cost-of-living allowances** – a change in wages utilizing a cost-of-living formula
- **Deadheading pay** – payment for workers' time spent unloading/loading a return trip
- **Guaranteed pay (also known as "make-up pay")** – this is the minimum payment to an employee on an incentive system (e.g., if a worker is guaranteed payment for two hours of work, but their day only consisted of 1.5 hours of work, they are still paid for the two hours)
- **Hazard pay (also known as "add-on to base rate")** – payment based on working conditions
- **Incentive pay (also known as "pay-for-performance")** – compensation to a worker based on performance
- **Longevity pay** – payment that an employee receives for seniority with an employer
- **Over-the-road pay** – payment by the mile
- **Piece rates** – payment based on a constant pay rate per unit of production
- **Portal-to-portal rates** – payment for travel to a job
- **Production bonuses** – payment based on excess production of a quota/completion of a job within a standard time
- **Tips** – voluntary payment in addition to an employee's base rate for services provided

There is a confidentiality aspect that is central to the BLS's mission, wherein the data collected from the OES survey are used only for statistical purposes. Once the raw employment and wage data are collected from employers, state workforce agencies manually analyze and classify each job reported into a detailed occupation as required by the Standard Occupational Classification (SOC) system. This coding is an important function of the OES survey because employers may have differing job titles for the same occupation. Once categorized into appropriate standardized occupations, OES then provides these wage and employment estimates by occupation for specific industries, individual states, and metropolitan and nonmetropolitan areas. *Industry-specific* estimates refer to wage and employment data within one specific industry. Once collected, these data are then aggregated to indicate two- and 10-year wage and employment projections for each occupation. The Indiana Department of Workforce Development also provides the data for the state's 11 economic growth regions. Employment and wage data have been essential labor market indicators, and having accurate historical data and statistically sound projections aids in thorough analysis of declining and growing industries and occupations. With data being released in late March or early April each year, employers, job seekers, state and local workforce development boards, educational institutions, and policymakers can use it in a variety of ways to support and sustain a state's economy.

# County Unemployment Rates August 2019 - Non Seasonally Adjusted



INDIANA  
DEPARTMENT OF  
**WORKFORCE**  
DEVELOPMENT

## Questions?

Please contact the DWD  
Research and Analysis  
Regional Labor Analyst  
listed below:

Cassie Janes

Regional Labor Analyst  
Research and Analysis

[Indiana Department of  
Workforce Development](http://Indiana Department of Workforce Development)

709 S. Reed Rd

Kokomo, IN 46901

765-454-4760

[cjanes@dwd.in.gov](mailto:cjanes@dwd.in.gov)